

ORDINANCE NUMBER 2004-14

ORDINANCE OF THE CITY OF MIDWAY, FLORIDA, VOLUNTARILY ANNEXING APPROXIMATELY 8 ACRES OF LAND OWNED WILLIAM T. MATTICE, LLC., INTO THE CITY OF MIDWAY, FLORIDA; PROVIDING FOR A LEGAL DESCRIPTION OF THE LAND; PROVIDING FOR AN EFFECTIVE DATE

WHEREAS, William T. Mattice, LLC., has indicated a desire to voluntarily annex approximately 8 acres of land located in the Gadsden Station 10/90 Commerce Park into the City of Midway and has petitioned the City for a voluntary annexation; and,

WHEREAS, the City Council of the City of Midway, Florida, has conducted two public hearings in accordance with Florida Statutes, Chapter 171, Section 171.044 - Voluntary Annexation.

NOW, THEREFORE, BE IT ORDAINED by the City Council of the City of Midway, Florida, as follows:

Section 1. The City of Midway, Florida, hereby voluntarily annexes the following described properties owned by William T. Mattice, LLC., into the City of Midway, Florida.

Lots 42 and 43, Block C of Gadsden 10/90 Commerce Park.

Section 2. A copy of this ordinance, upon adoption by the City Council, shall be filed with the Clerk of the Circuit Court and the County Manager of Gadsden County and the Florida Department of State within seven days after adoption.

Section 3. This ordinance shall become effective in accordance with Florida State law.

INTRODUCED and read the First Time at a regularly scheduled City Council meeting on Thursday, September 2, 2004.

**READ THE SECOND TIME AND ADOPTED by the City Council of the City of Midway at a regularly scheduled City Council meeting on Thursday, October
7, 2004.**

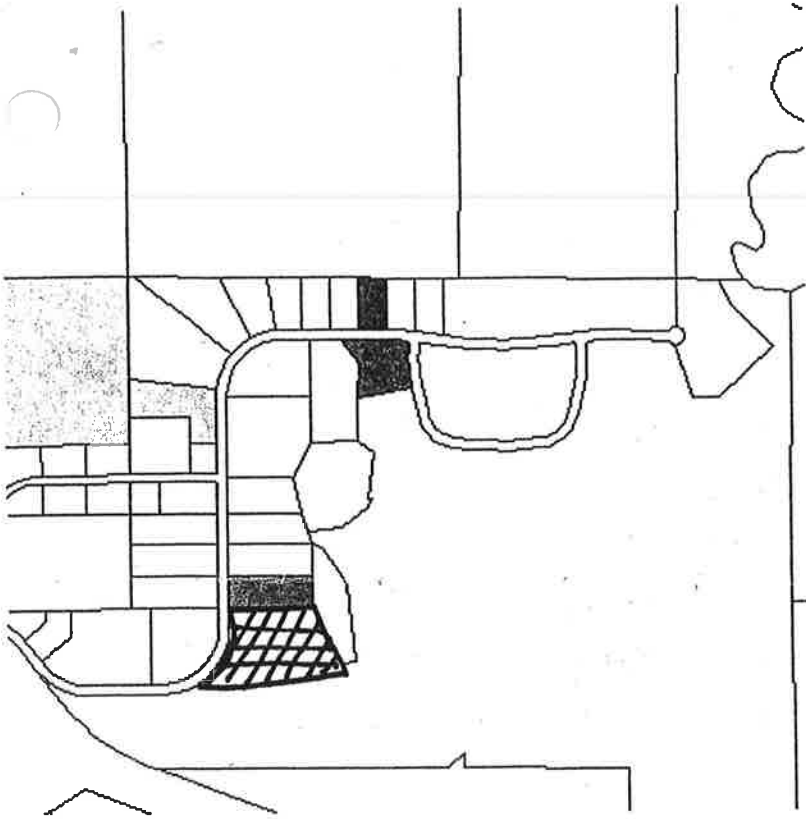
ATTEST:



Frances Harrell
City Clerk



Delores Madison, Mayor



ORDINANCE NUMBER 2004-8

ORDINANCE OF THE CITY OF MIDWAY, FLORIDA, VOLUNTARILY ANNEXING APPROXIMATELY 132.95 ACRES OF LAND OWNED BY LEX C. THOMPSON JAMES L. THOMPSON AND JLT REAL ESTATE INVESTMENT, LLC, INTO THE CITY OF MIDWAY, FLORIDA; PROVIDING FOR A LEGAL DESCRIPTION OF THE LAND; PROVIDING FOR AN EFFECTIVE DATE

WHEREAS, Lex C. Thompson, James L. Thompson and JLT Real Estate Investment, LLC, have indicated a desire to voluntarily annex approximately 132.95 acres of land located adjacent to and north of CR 268 and west of Hill Top Subdivision North into the City of Midway and has petitioned the City for a voluntary annexation; and,

WHEREAS, the City Council of the City of Midway, Florida, has conducted two public hearings in accordance with Florida Statutes, Chapter 171, Section 171.044 - Voluntary Annexation.

NOW, THEREFORE, BE IT ORDAINED by the City Council of the City of Midway, Florida, as follows:

Section 1. The City of Midway, Florida, hereby voluntarily annexes the following described properties owned by Mr. Lex C. Thompson, James L. Thompson and JLT Real Estate Investment, LLC into the City of Midway, Florida.

DESCRIPTION: NEW PARCEL 3

"Commence at a concrete monument marking the Northwest corner of Section 2, Township 1 North, Range 3 West, Gadsden County, Florida and run South 00 degrees 10 minutes 11 seconds East, along the West boundary line of said Section 2, 1137.34 feet to an aluminum pipe, thence departing said West boundary line run South 89 degrees 56 minutes 04 seconds East 1276.24 feet to an aluminum pipe, thence run north 78 degrees 40 minutes 23 seconds East 55.01 feet to an aluminum pipe, thence run North 67 degrees 12 minutes 24 seconds East 54.99 feet to an aluminum pipe, thence run North 55 degrees 52 minutes 17 seconds east 55.07 feet to an aluminum pipe, thence run North 44 degrees 18 minutes 30 seconds East 148.95 feet to an aluminum pipe on the Southwesterly right of way line of the CSX Transportation Railroad, thence continue North 44 degrees 18 minutes 30 seconds East 200.03 feet to an iron rod on the Northeasterly right of way line of said CSX Transportation Railroad, thence run Southeasterly along said Northeasterly right of way line as follows: South 44 degrees 46 minutes 16 seconds East 599.26 feet to an iron rod, said iron rod being on a curve concave to the Northeast, thence run in a Southeasterly direction along said curve having a radius of 1983.68 feet, through a central angle of 15 degrees 40 minutes 18 seconds for an arc length of 542.58 feet, chord of said arc being South 52 degrees 36 minutes 26 seconds East 540.89 feet to an iron rod, thence run South 60 degrees 26 minutes 35 seconds East 853.06 feet to an iron rod, thence departing said Northeasterly right of way line run South 36 degrees 1671.96 feet to an iron rod on the Southeasterly right of way line of said CSX Transportation Railroad for the POINT OF BEGINNING, thence from said Point of Beginning continue South 36 degrees 25 minutes 38 seconds West 566.75 feet to an iron rod on the Northeasterly right of way line of County Road 268, said iron rod being on a curve concave to the Southwest, thence run Southeasterly along said Northeasterly right of way line as follows: run in a Southeasterly direction along said curve having a radius of 5779.65 feet, through a central angle of 07 degrees 59 minutes 19 seconds for an arc length of 805.85 feet, chord of said arc being South 48 degrees 38 minutes 31 seconds East 805.19 feet to a concrete monument, thence run South 44 degrees 38 minutes 51 seconds East 669.66 feet to an iron rod being on a curve concave to the Southwest, thence run in a Southeasterly direction along said curve having a radius of 5779.65 feet, through a central angle of 04 degrees 08 minutes 46 seconds for an arc length of 418.24 feet, chord of said arc being South 42 degrees 34 minutes 28 seconds East 418.15 feet to a concrete monument, thence departing said Northeasterly right of way line

ORDINANCE NUMBER 2004-5

**ORDINANCE OF THE CITY OF MIDWAY, FLORIDA, VOLUNTARILY
ANNEXING APPROXIMATELY 4.83 ACRES OF LAND OWNED BY CHARLES H.
MUSGROVE INTO THE CITY OF MIDWAY, FLORIDA; PROVIDING FOR A LEGAL
DESCRIPTION OF THE LAND; PROVIDING FOR AN EFFECTIVE DATE**

WHEREAS, Charles H. Musgrove has indicated a desire to voluntarily annex approximately 4.83 acres of land located adjacent to the 10/90 Commerce Park into the City of Midway and has petitioned the City for a voluntary annexation; and,

WHEREAS, the City Council of the City of Midway, Florida, has conducted two public hearings in accordance with Florida Statutes, Chapter 171, Section 171.044 - Voluntary Annexation.

NOW, THEREFORE, BE IT ORDAINED by the City Council of the City of Midway, Florida, as follows:

Section 1. The City of Midway, Florida, hereby voluntarily annexes the following described properties owned by Mr. Charles H. Musgrove into the City of Midway, Florida.

Lot 1 and Lot 2, Block D, Gadsden 10/90 Commerce Park, Phase 4, as per map or plat thereof recorded in Plat Book 2, Page 92 of the Public Records of Gadsden County, Florida.

Section 2. A copy of this ordinance, upon adoption by the City Council, shall be filed with the Clerk of the Circuit Court and the County Manager of Gadsden County and the Florida Department of State within seven days after adoption.

Section 4. This ordinance shall become effective in accordance with Florida State law.

INTRODUCED and read the First Time at a regularly scheduled City Council meeting on Thursday, June 3, 2004.

**READ THE SECOND TIME AND ADOPTED by the City Council of the City of Midway at a regularly scheduled City Council meeting on Thursday, _____
July 1, 2004.**

ATTEST:



Delores Madison, Mayor



**Francis Harrell
City Clerk**

ORDINANCE NUMBER 2004-3

AN ORDINANCE OF THE CITY OF MIDWAY, FLORIDA, VOLUNTARILY ANNEXING 1.63 ACRES OF LAND OWNED BY LEX C. THOMPSON AND SIDNEY E. GRAY INTO THE CITY OF MIDWAY, FLORIDA; PROVIDING FOR A LEGAL DESCRIPTION OF THE LAND; PROVIDING FOR AN EFFECTIVE DATE

WHEREAS, Lex C. Thompson and Sidney E. Gray have indicated a desire to voluntarily annex approximately 1.63 acres of land located adjacent to the 10/90 Commerce Park into the City of Midway; and,

WHEREAS, this land had been inadvertently omitted from an earlier annexation and the voluntary annexation ties two parcels of land together and eliminates an enclave; and,

WHEREAS, the City Council of the City of Midway, Florida, has conducted two public hearings in accordance with Florida Statutes, Chapter 171, Section 171.044 - Voluntary Annexation.

NOW, THEREFORE, BE IT ORDAINED by the City Council of the City of Midway, Florida, as follows:

Section 1. The City of Midway, Florida, hereby voluntarily annexes the following described properties owned by Mr. Lex C. Thompson and Mr. Sidney E. Gray into the City of Midway, Florida.

1.63 ACRE TRACT

BEGIN at the Southeast corner of Lot 40, Block "C" of Gadsden 10/90 Commerce Park, Phase 1, a subdivision as per map or plat thereof recorded in Plat Book 2, Page 74 of the Public Records of Gadsden County, Florida, thence run North 00 degrees 08 minutes 21 seconds West along the East boundary of said Lot 41 a distance of 250 feet to the Southeast corner of Lot 39 of said Block "C", thence leaving said East boundary of Lot 40 run North 19 degrees 56 minutes 17 seconds West along the East boundary of said Lot 39 a distance of 100.43 feet to a point lying on the South boundary of Stormwater Management Facility No. 3 of said Gadsden 10/90 Commerce Park, Phase 1, thence leaving said East boundary of Lot 39 run North 82 degrees 40 minutes 15 seconds East along said South boundary of Stormwater Management Facility No. 3 a distance of 268.46 feet, thence leaving said South boundary of Stormwater Management Facility No. 3 run North 42 degrees 15 minutes 21 seconds East a distance of 309.02 feet to the Southwest Corner of Lot 31 B, Block "C" of Gadsden 10/90 Commerce Park, Phase 4, a subdivision as per map or plat thereof recorded in Plat Book 2, Page 92 of the Public Records of Gadsden County, Florida, thence run South 82 degrees 24 minutes 20 seconds East along the South boundary of said Lot 31 B a distance of 32.77 feet to a point on the East boundary of the aforesaid Stormwater Management Facility No. 3, thence leaving said South boundary of Lot 31 B run South 26 degrees 35 minutes 59 seconds West along said East boundary of Stormwater Management Facility No 3 a distance of 69.69 feet, thence leaving said East boundary of Stormwater Management Facility No. 3 run South 39 degrees 10 minutes 00 seconds West a distance of 697.44 feet to the POINT OF BEGINNING. Containing 1.63 acres, more or less.

Section 2. The Surveyor's map and certified legal description of the property shall be attached hereto and made a part of this ordinance.

Section 3. A copy of this ordinance, upon adoption by the City Council, shall be filed with the Clerk of the Circuit Court and the County Manager of Gadsden County and the Florida Department of State within seven days after adoption.

Section 4. This ordinance shall become effective in accordance with Florida State law.

INTRODUCED and read the First Time at a regularly scheduled City Council meeting on Thursday, May 6, _____, 2004.

**READ THE SECOND TIME AND ADOPTED by the City Council of the City of Midway at a regularly scheduled City Council meeting on Thursday, _____
June 3, 2004.**

ATTEST:



Delores Madison, Mayor



**Francis Harrell
City Clerk**

ORDINANCE NUMBER 2004-4

AN ORDINANCE OF THE CITY OF MIDWAY, FLORIDA, VOLUNTARILY ANNEXING APPROXIMATELY 7.35 ACRES OF LAND OWNED BY D. R. VAUSE INTO THE CITY OF MIDWAY, FLORIDA; PROVIDING FOR A LEGAL DESCRIPTION OF THE LAND; PROVIDING FOR AN EFFECTIVE DATE

WHEREAS, D. R. Vause has indicated a desire to voluntarily annex approximately 7.35 acres of land located adjacent to the 10/90 Commerce Park into the City of Midway and has petitioned the City for a voluntary annexation; and,

WHEREAS, this land had been inadvertently omitted from an earlier annexation and the voluntary annexation ties two parcels of land together and eliminates an enclave; and,

WHEREAS, the City Council of the City of Midway, Florida, has conducted two public hearings in accordance with Florida Statutes, Chapter 171, Section 171.044 - Voluntary Annexation.

NOW, THEREFORE, BE IT ORDAINED by the City Council of the City of Midway, Florida, as follows:

Section 1. The City of Midway, Florida, hereby voluntarily annexes the following described properties owned by Mr. D. R. Vause into the City of Midway, Florida.

Lot 31A and Lot 31B, Block C, Gadsden 10/90 Commerce Park, Phase 4, as per map or plat thereof recorded in Plat Book 2, Page 92 of the Public Records of Gadsden County, Florida.

Section 2. A copy of this ordinance, upon adoption by the City Council, shall be filed with the Clerk of the Circuit Court and the County Manager of Gadsden County and the Florida Department of State within seven days after adoption.

Section 4. This ordinance shall become effective in accordance with Florida State law.

INTRODUCED and read the First Time at a regularly scheduled City Council meeting on Thursday, June 3, 2004.

READ THE SECOND TIME AND ADOPTED by the City Council of the City of Midway at a regularly scheduled City Council meeting on Thursday, _____
July 1, 2004.

ATTEST:


Francis Harrell
City Clerk


Delores Madison, Mayor