

**ORDINANCE NUMBER 2003-60**

**AN ORDINANCE OF THE CITY OF MIDWAY, FLORIDA, VOLUNTARILY ANNEXING APPROXIMATELY 1 ACRE OF LAND OWNED BY THE C. DAVIS TRUSTEES INTO THE CITY OF MIDWAY, FLORIDA; PROVIDING FOR A LEGAL DESCRIPTION OF THE LAND; PROVIDING FOR AN EFFECTIVE DATE**

**WHEREAS**, the C. Davis Trustees have indicated a desire to voluntarily annex approximately 1 acre of land into the City of Midway; and,

**WHEREAS**, the City Council of the City of Midway, Florida, has conducted two public hearings in accordance with Florida Statutes, Chapter 171, Section 171.044 - Voluntary Annexation.

**NOW, THEREFORE, BE IT ORDAINED** by the City Council of the City of Midway, Florida, as follows:

Section 1. The City of Midway, Florida, hereby voluntarily annexes the following described properties owned by the C. Davis Trustees into the City of Midway, Florida:

"OR 145 P 377 SE 1/4, less 0.13 acre in NE 1/4 of SE 1/4. Less Right of ways for R/R and US #90. Section 15-1N-2W; less part per OR 463 P 1598. OR 463 P 1590 less part per OR 474 P 991 less parts sold".

Gadsden County Property Appraiser's Office Land Parcel: 4-15-1N-2W-0000-00400-0100.

Section 2. A copy of this ordinance, upon adoption by the City Council, shall be filed with the Clerk of the Circuit Court and the County Manager of Gadsden County and the Florida Department of State within seven days after adoption.

Section 4. The city manager shall take appropriate steps to ensure that notice of the annexation is given to Talquin Electric Coop and that changes be made to the Florida Department of Revenue database state listing for telephone service and cablevision service to ensure proper distribution of the telecommunications services tax.

Section 5. This ordinance shall become effective in accordance with Florida State law.


**INTRODUCED and read the First Time at a regularly scheduled City Council meeting on Thursday, November 20, 2003.**

**READ THE SECOND TIME AND ADOPTED** by the City Council of the City of Midway at a regularly scheduled City Council meeting on Thursday, February 26, 2004.

**ATTEST:**



**Delores Madison, Mayor**



**Francis Harrell, City Clerk**

GADSDEN HOME

# Gadsden County Parcel Maps

[BACK TO SEARCH PAGE](#)

Map Help Click Here

- Zoom Out
- Zoom In
- Zoom County
- Zoom to Box
- Print Page

Center Map On Selected Parcel

Zoom To The Selected Parcel

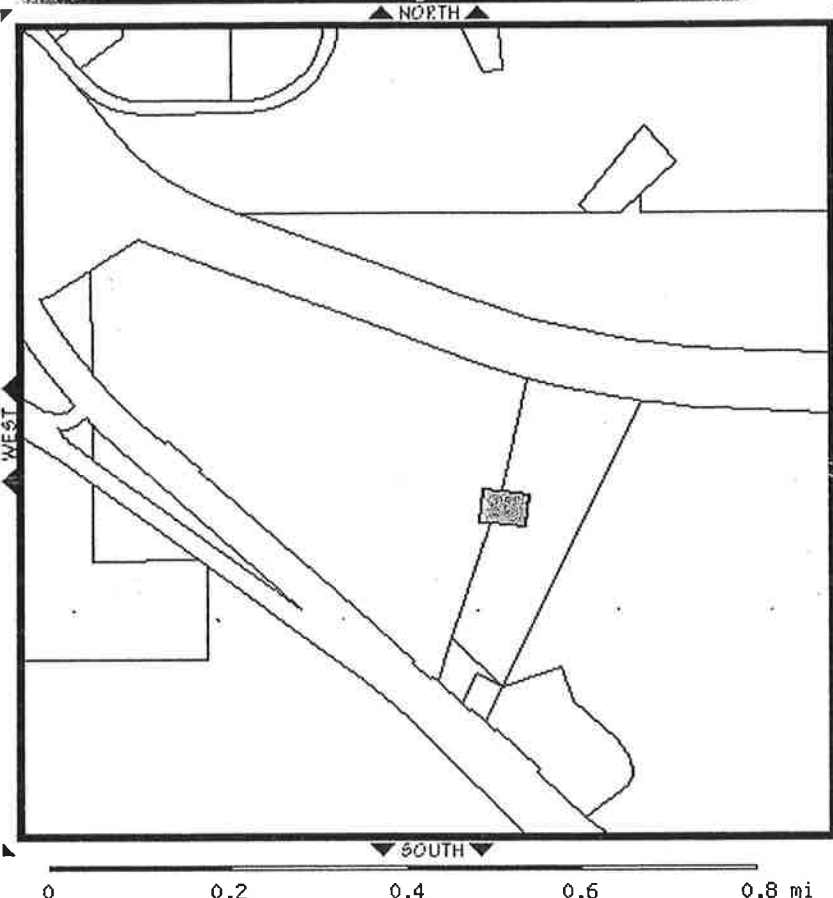
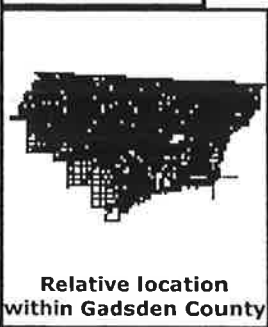
Show:

- Roads
- Dimensions
- Yearly Sales

Sales for year:  
 2001  2002  2003

Last 4 Parcel Digits

Show Aerial Photograph



0 0.2 0.4 0.6 0.8 mi

<b>PARCEL INFO</b>	
Selected Parcel	
Property Use	
Acres	
Land Use	
<b>OWNERSHIP INFO</b>	
Name	
Mailing Address	
Situs Address	
<b>VALUATION</b>	
Land Value	
Agricultural Value	
Building Value	
Misc Value	
Just Value	
Assessed Value	
Exempt Value	
Taxable Value	
Homesteaded	
<b>LAST 2 :</b>	
Date	Price

The Gadsden County Property Appraiser's Office makes every effort to produce the most accurate information possible. No warranties, expressed or implied, are provided for the data herein, its use or interpretation. The assessment information is from the last certified taxroll. All data is subject to change before the next certified taxroll.

[APPRaiser HOME](#) ----- [RETURN TO SEARCH PAGE](#)